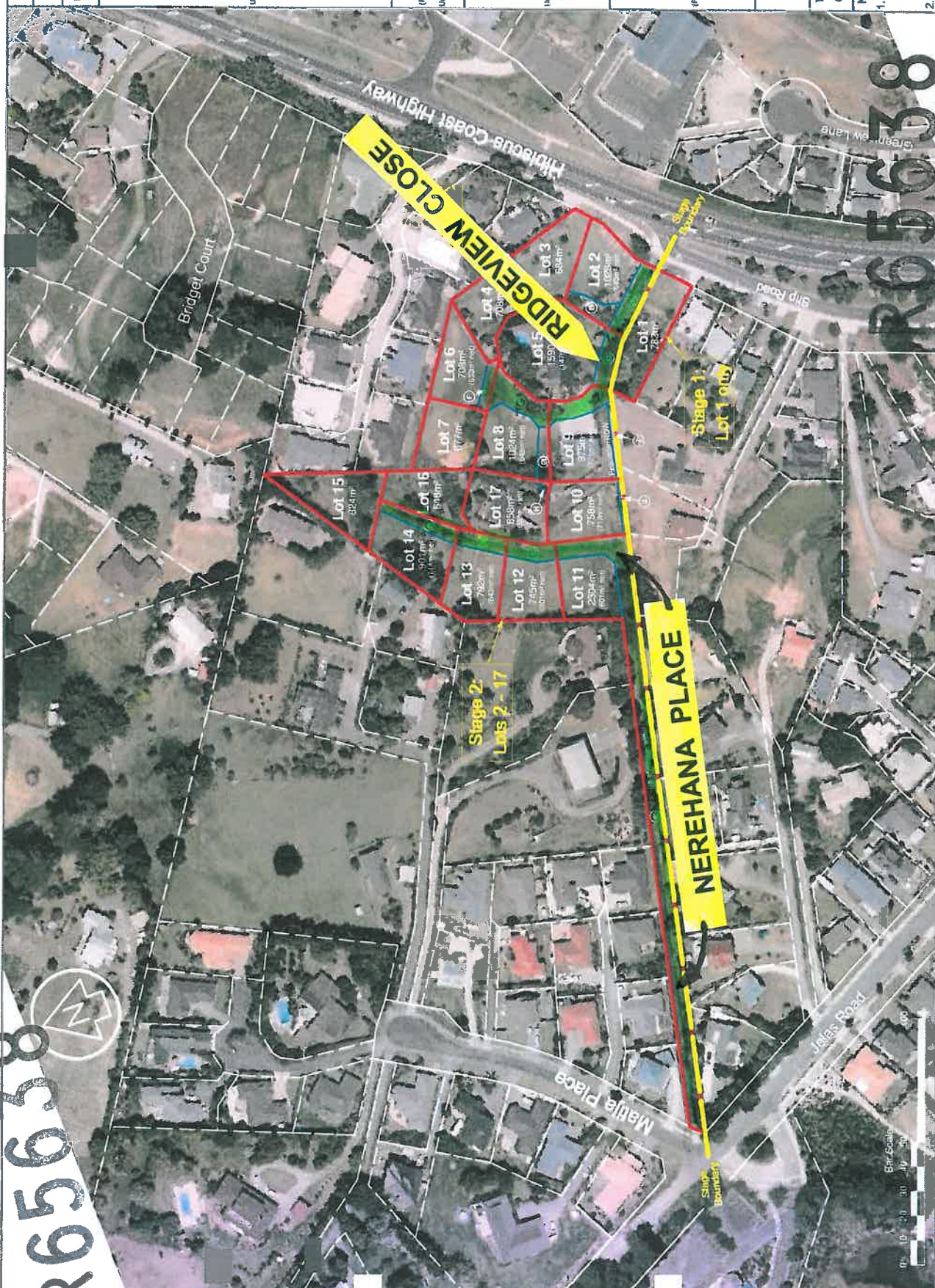


R65638



| Territorial Authority, Auckland Council | | | |
|--|--|-------|--------------------------------------|
| Proposed Easements | | Shown | Dominant Tenement |
| Purpose | | (A) | Lots 3 to 10 hereon & 17 hereon |
| | | (B) | Lot 2 hereon |
| | | (C) | Lot 3 hereon |
| | | (D) | Lots 4 to 10 hereon & 17 hereon |
| Right of Way and Underground Services | | (E) | Lots 4 to 10 hereon & 17 hereon |
| | | (F) | Lots 4, 6, 7, 10 & 17 hereon |
| | | (G) | Lots 4 & 7 hereon |
| | | (H) | Lots 10 & 17 hereon |
| Right of Way (Easement) and Underground Services | | (I) | Lots 1 to 9 hereon |
| | | (J) | Lots 1 to 9 hereon & 11 to 17 hereon |
| | | (K) | Lots 12 to 16 hereon |
| | | (L) | Lots 1 to 16 hereon |
| Right of Way and Underground Services | | (M) | Lots 12 to 16 hereon |
| | | (N) | Lots 1 to 16 hereon |
| | | (O) | Lots 1 to 16 hereon |
| | | (P) | Lots 1 to 16 hereon |
| Right of Way (Easement) | | (Q) | Lots 1 to 9 hereon & 11 to 16 hereon |
| | | (R) | Lot 8 hereon |
| | | (S) | Lots 1 to 10 hereon & 17 hereon |
| | | (T) | Lots 1 to 10 hereon & 17 hereon |

Sheet 1 of 2

Total Area: 1.8012 ha.
 Completed In: 07/11/2015
 Notes:
 1. This plan is prepared for the purpose of obtaining subdivision consent and is not to be used for any other purpose.
 2. All metric measurements and areas are subject to final survey.

Client: Ridgeview Holdings Ltd
 130-132 HBC Highway &
 2 Matija Place, Red Beach

Drawing Title: Lots 1 - 17 Being Proposed Subdivision of Subdivision of Lot 2 DP 96520, Lot 3 DP 86867 & Lot 8 DP 38043

C & R SURVEYORS LTD
 Registered Professional Land Surveyors
 Phone (09) 428 4051
 Fax (09) 428 8087
 www.crsurveyors.co.nz



Scheme plan.
 Nerehana Place & Ridgeview Close